



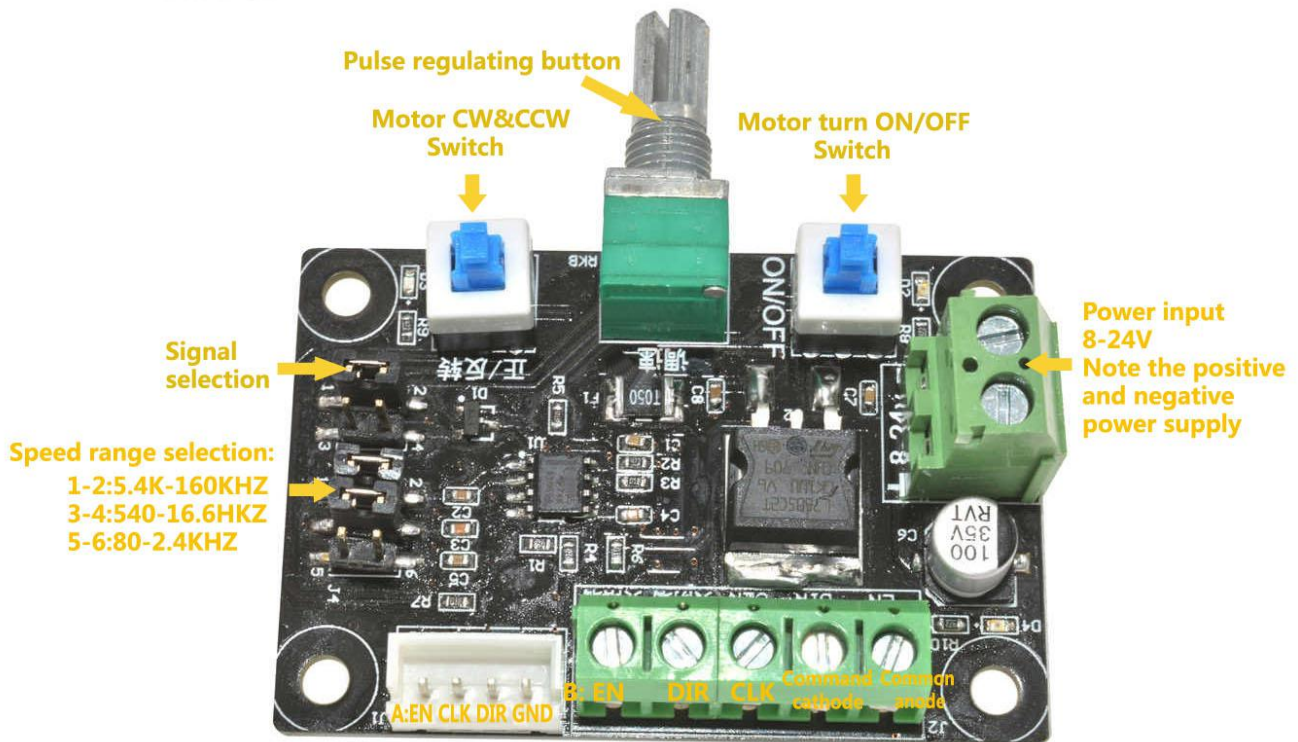
Pulse Jeneratörü (Hız Kontrol Kartı)

Pulse Jeneratörü

DC 12V 24V Motor Pulse Signal Generator for Stepper Motor Driver Controller Speed Regulator

Feature:

- 1, this module is a pulse generation module, supply the control signal to stepper driver. To control the stepper motor, it must be equipped with a drive.
- 2, this simple controller + stepper motor + stepper motor + DC power supply can be composed of a simple set of control platform.
- 3, the controller has high 5.4k-160khz, middle 540-16.6khz, low 80-2.4khz total of 3 kinds of low frequency signal can be used to select the jumper.
- 4, can produce pulse signal, can also produce PWM signal, can choose the jumper.
- 5, the frequency of measurement: PUL and common cathode end.



The generated motor drive control signal output A and B signals can be connected to A group, used to connect the motor drive

Different stepper driver may mark different name

Pulse Jeneratörü

EN=ENA=FREE Enable
PUL=PULS=CLK Pulse
DIR=CW=CWW Direction

Common anode Connection method (B)

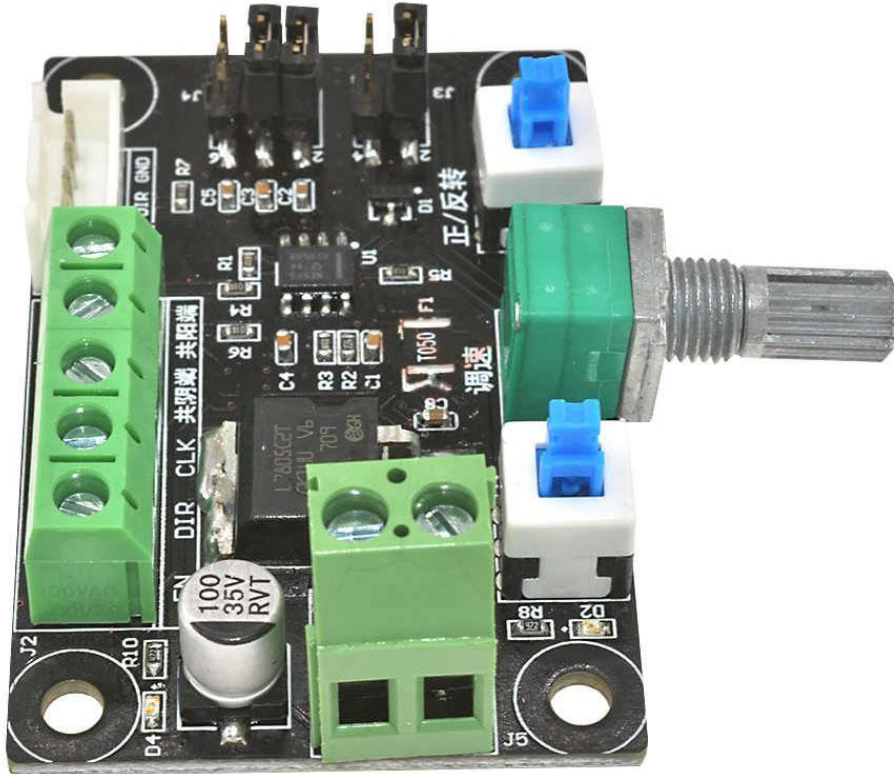
EN+ PUL+ DIR+ connect together to com+.
EN- connect EN
PUL- connect CLK
DIR- connect DIR

Common cathode Connection method (B)

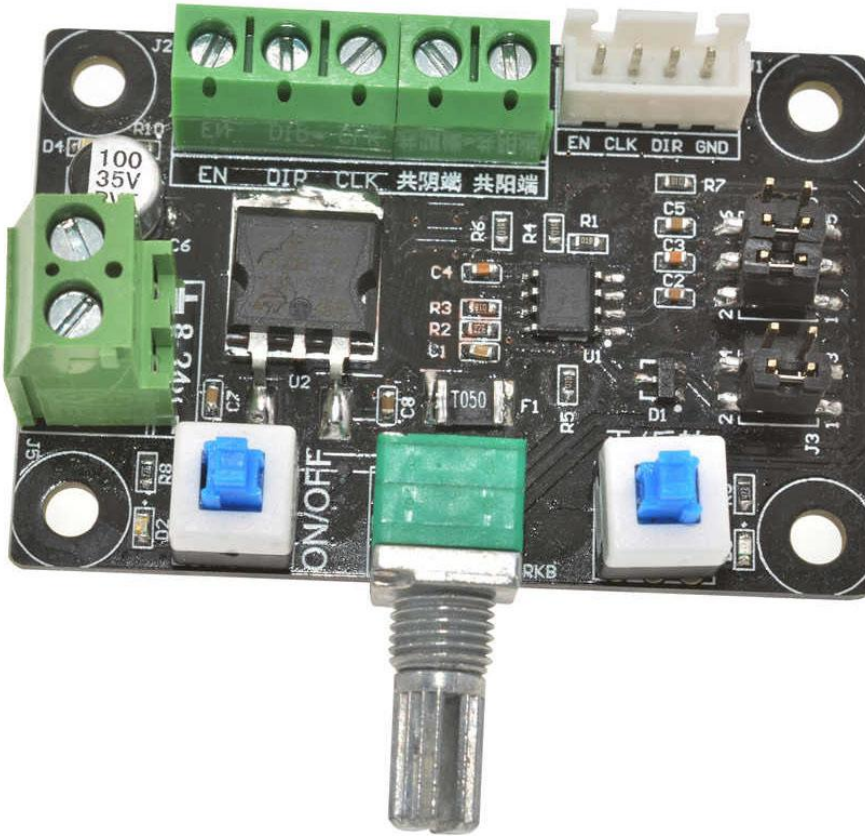
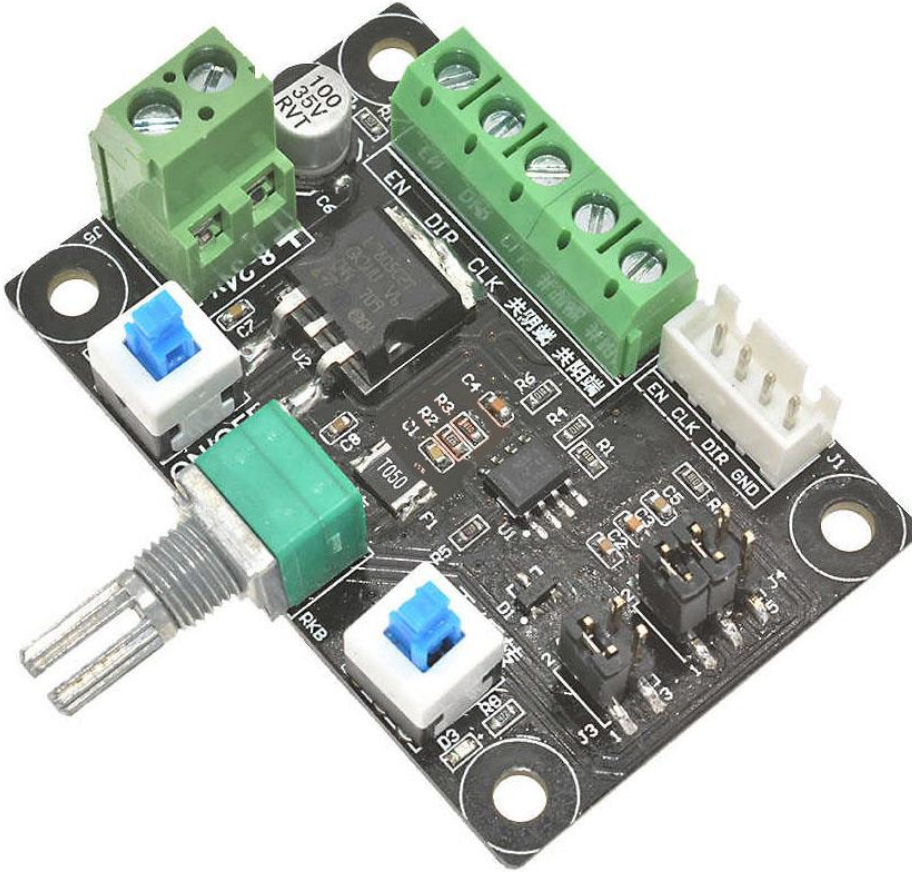
EN- PUL- DIR- connect together to com-.
EN+ connect EN
PUL+ connect CLK
DIR+ connect DIR

Package Included:

1x Control Signal Generator Module



Pulse Jeneratörü



Pulse Jeneratörü



Pulse Jeneratörü

